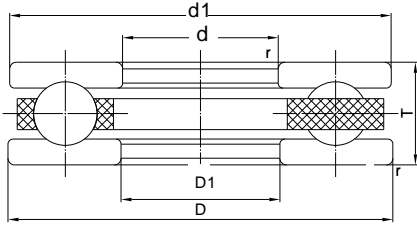


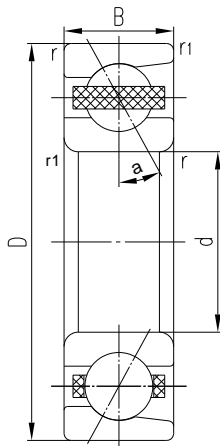
## 止推軸承尺寸 Trust Bearing Dimension



Bearing NO.	d, mm	D1, mm	D, mm	T, mm
51100	10	11	24	9
51101	12	13	26	9
51102	15	16	28	9
51103	17	17	30	9
51104	20	21	35	10
51105	25	26	42	11

- 保持器標準規格是尼龍，也可以選擇PEEK。  
Standard cage is polyamide, PEEK can be option.

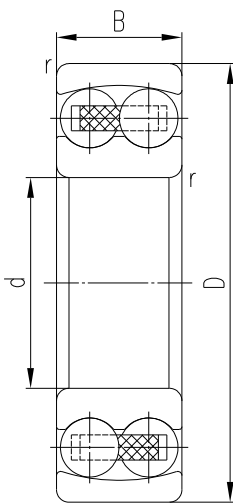
## 斜角式軸承尺寸 Angular Contact Bearing Dimension



Bearing NO.	d, mm	D, mm	B, mm
7000	10	26	8
7001	12	28	8
7002	15	32	9
7003	17	35	10
7904	20	37	9
7004	20	42	12
7005	25	47	12

- 斜角式 AC=25°  
Contact angular AC=25°

## 自動調心軸承 Self-aligning Ball Bearing



Bearing NO.	d, mm	D, mm	B, mm
1200	10	24	9
1201	12	32	10
1202	15	35	11
2202	15	35	14
1203	17	40	12
1204	20	47	14
2204	20	47	18
1205	25	52	15
2205	25	52	18

- 保持器標準規格是尼龍，也可以選擇PEEK。  
Standard cage is polyamide, PEEK can be option.